

ENG

Installation Instruction

Engineered Vinyl Planks/Tiles (EVP/EVT)

BEFORE THE INSTALLATION

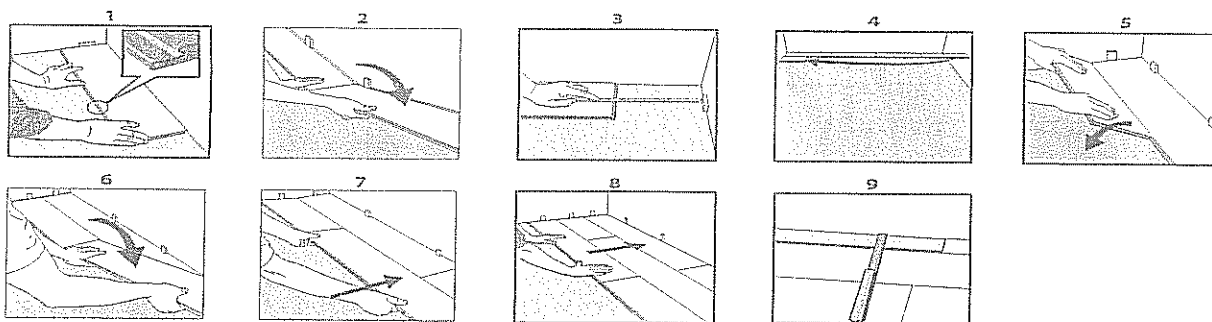
Conditioning

Your engineered vinyl flooring should be stored in the room they are to be installed for a minimum of 48 hours prior to installation. During this time, the planks should remain in the carton on a flat surface, room temperature should be maintained between 65° and 80°F (18° to 27°C) and humidity between 30-50%. It is also recommended to cut the carton on the short side to allow airflow inside the box.

Preparation

- Make sure that the subfloor is smooth, flat, dry, clean and solid. Any adhesive residue or carpet staples should be removed prior to installation.
- Engineered vinyl flooring can be installed directly on concrete (or anhydrite) subfloor and over most existing hard floor coverings providing they are smooth, flat, dry, clean and solid. Do not install over carpet or any other soft subfloors.
- Subfloors should be flat within a tolerance of 1/16" (2 mm) over a span of 4 feet (1,2 m). Any unevenness over 1/16" (2 mm) must be sanded down or levelled with a floor leveller. Voids or humps in the subfloor will prevent the planks from locking properly.
- Ceramic tiles should be made smooth by applying a cementitious overlay such as patching or levelling compound to smooth out grout joints.
- Although engineered vinyl planks are waterproof, they are not to be used as a moisture barrier. Your subfloor should be completely dry prior to installation of the engineered vinyl flooring (<2,5% moisture degree for concrete subfloor, <0.5% for anhydrite). Moisture will not damage the product but it might get into walls and structure of the home.
- The final responsibility for determining if the subfloor is well prepared and dry enough for installation of the engineered vinyl flooring lies with the floor covering installer. It is recommended to use certified flooring installers.
- The largest recommended installation area is 3000 ft² (300 m²). It is recommended to use 1/4" (6 mm) expansion gap in the areas longer/wider than 65 feet (20 m) and in door openings, especially if there are temperature differences between areas.

INSTALLATION



General rules

- When installing the engineered vinyl flooring you must remember to leave a 1/4" (6 mm) gap around the perimeter of the room. When first starting the installation you can install against the wall and after 2-3 rows, adjust the distance from the wall by 1/4" (6 mm) and insert spacers to maintain that gap. Begin installation in the left corner remembering to leave a gap of 1/4" (6 mm) from the left wall.

- Insert the end section of the next floorboard at an angle to the first one, then lay down. Complete the first row in the same manner.
- Place the final floorboard face down and the short side without the locking strip towards the wall. The distance to the wall should be 6 mm. Mark where the floorboard is to be cut.
- Start the second row with the leftover cut part of the last plank of the previous row. The starter piece should measure at least 12" (30 cm). If not, start with a new plank and cut it larger than the required 12" (30 cm). Please note that end joints should always be at least 12" (30 cm) from each other from row to row.
- Place the floorboard at an angle against the floorboard in the previous row, press forward and fold down at the same time.
- Place the short end of the floorboard at an angle against the previous installed floorboard and fold down. Ensure that the board is positioned in the integral locking strip of the floorboard in the previous row.
- Lift both the current as well as the previous plank from this row, push to slide the current plank against the row in front so it aligns with the previous plank. The current and previous plank can now be folded completely down to horizontal position.
- After 2-3 rows adjust the distance to the front wall by placing spacers of 1/4" (6 mm). Keep the spacers in position during the entire time of installation and remove once the installation is completed.
- If the wall is uneven, the floorboards must be adapted to its contours. Mark the floorboards with the contour of the wall. Do not forget to leave 1/4" (6 mm) of gap from the wall. This procedure shall be used also for the first row if necessary.

IMPORTANT

- Engineered vinyl flooring may be installed over water-based radiant-heated subfloors according to above mentioned instructions, provided the surface temperature of the system does not exceed 81°F (27°C). Due to the speed of sudden temperature changes, which has potential to negatively affect vinyl flooring construction, it is not recommended to install over electrical radiant heating systems. This will not be covered by the manufacturer's warranty. Only radiant heating system using water is acceptable.
- When installing in the bathroom, please use professional silicone caulking to fill the expansion space at the tub, shower and all wet areas to prevent surface water seepage under the floor.
- It is not recommended to install engineered vinyl flooring in areas exposed to intense direct sunlight and temperature greater than 140°F (60°C).
- Above installation instructions are for engineered vinyl flooring with click (floating installation).

AFTER INSTALLATION

Care and maintenance

In order to maintain your engineered vinyl flooring in good condition:

- keep the temperature in the room between 65° and 80°F (18° to 27°C)
- sweep or vacuum daily using soft bristle attachments
- clean up spills and excessive liquids immediately
- damp mop as needed and use cleaners recommended for no-wax vinyl floors
- protect floor from constant direct sunlight
- use proper floor protection devices such as felt protectors under furniture and a mat at entrance ways
- make sure pets have nails clipped regularly
- do not use abrasive cleaners, bleach or wax to maintain the floor
- do not drag or slide heavy objects across the floor